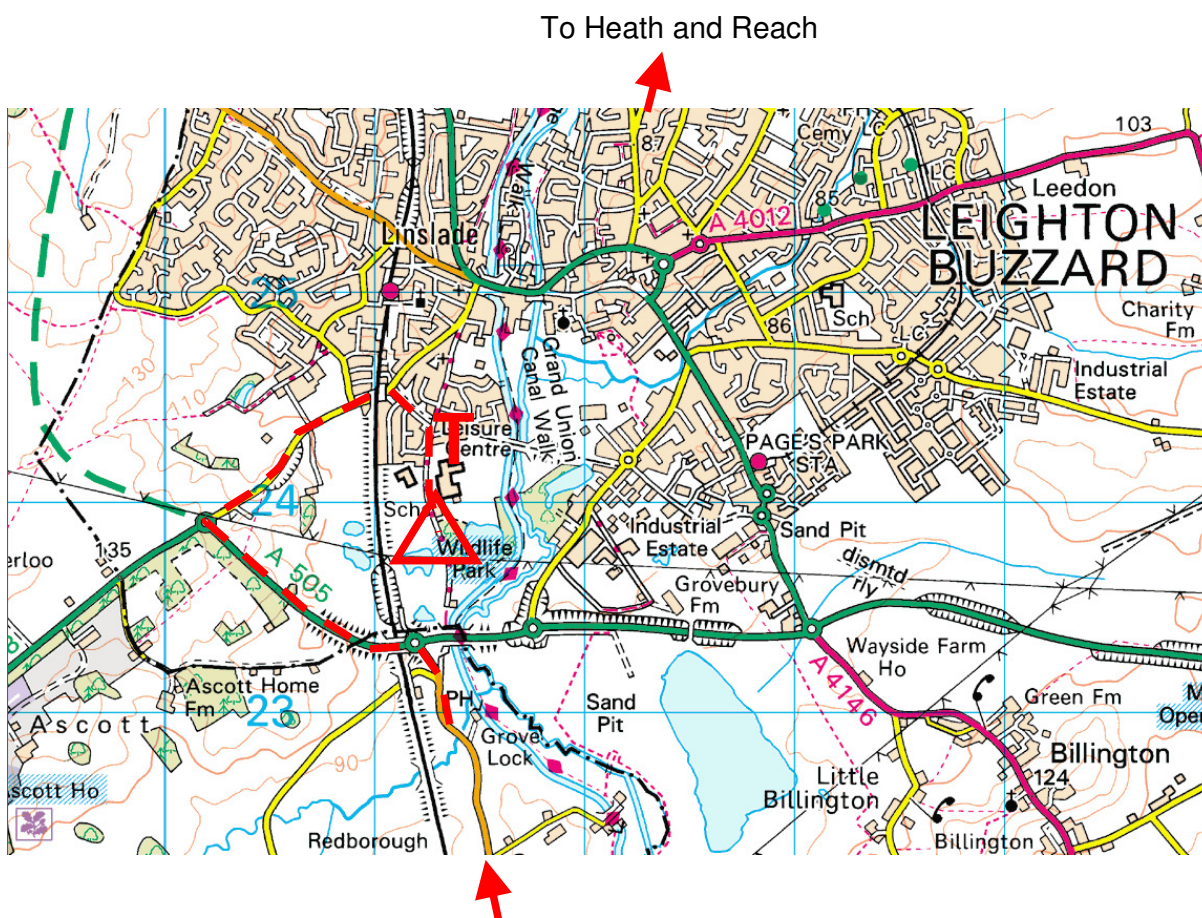


Parking at Greensand Relay changeovers

- P** Parking
- △** Leg start / finish
- T** Toilets (only at the start of legs 1 and 2)

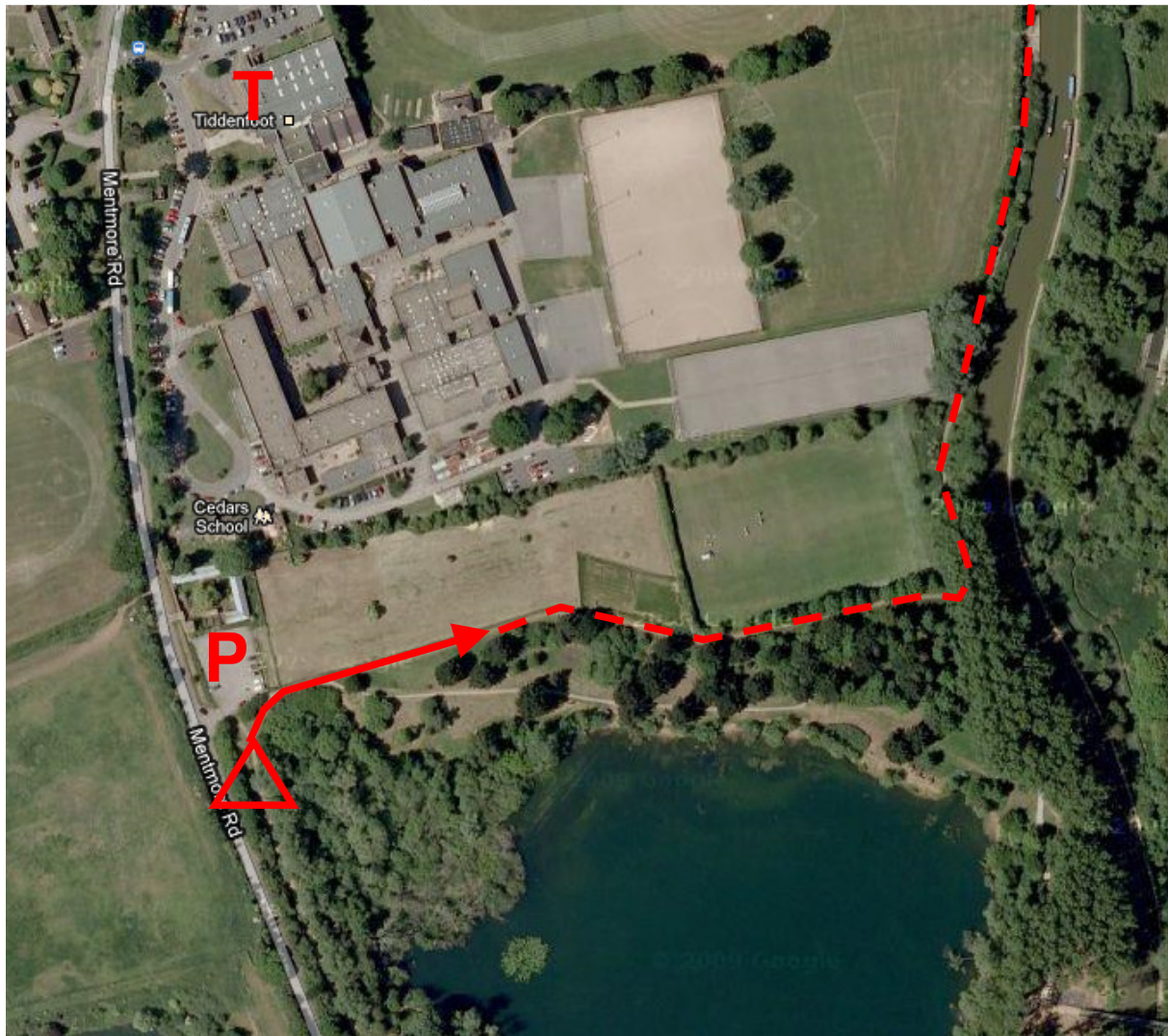
Leg 1 start, Leighton Buzzard – driving info.



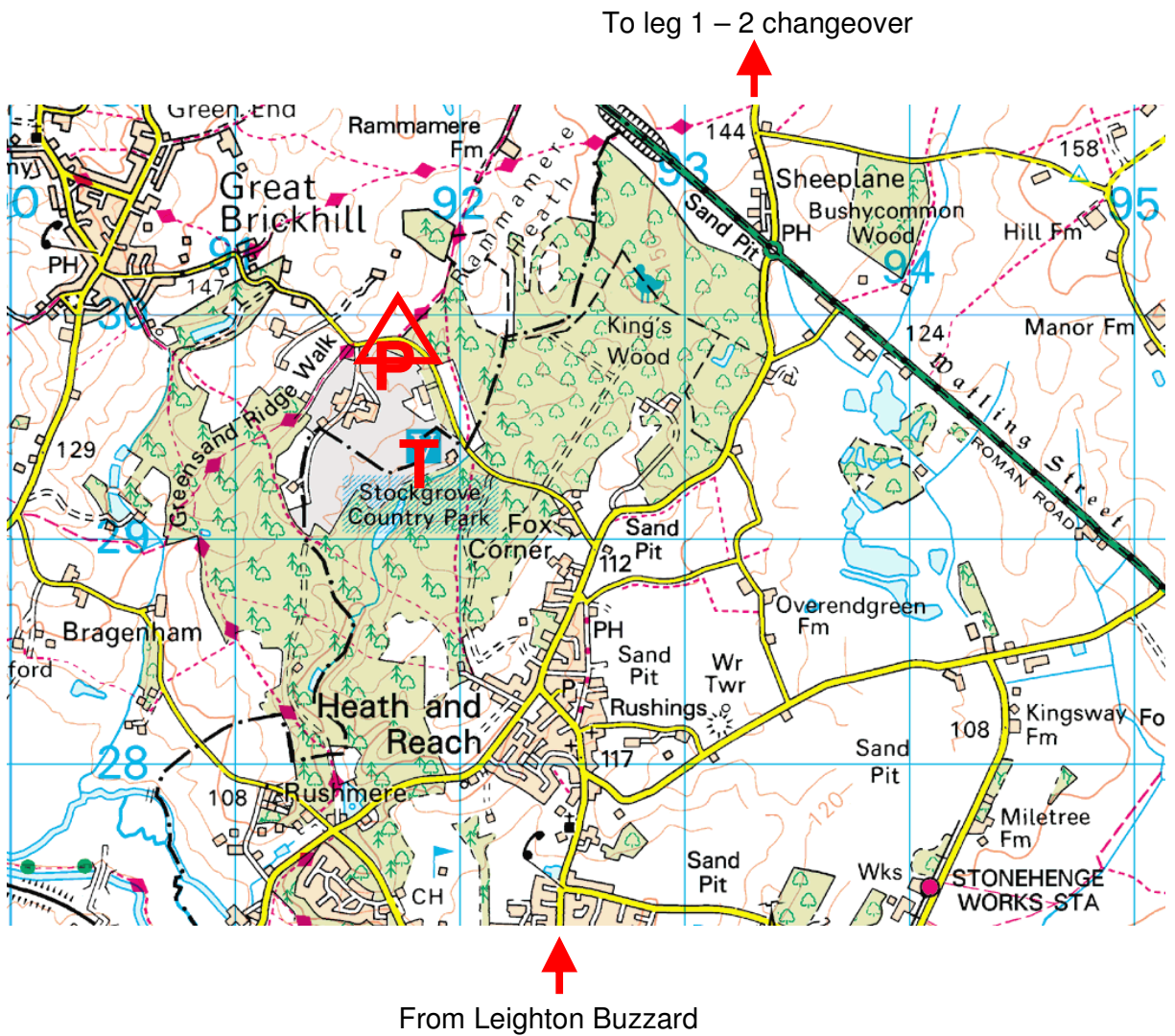
Recommended route when approaching from Ivinghoe. There is parking at the Wildlife Park, go past the Leisure Centre to find it.

Sat Nav users: post code of parking LU7 2AE – approximate location only!
Don't turn into the leisure centre.

Leg 1 start, Leighton Buzzard



Leg 1 to 2 changeover, Stockgrove – driving info



Sat Nav users: post code of parking LU7 0BD – approximate location only!

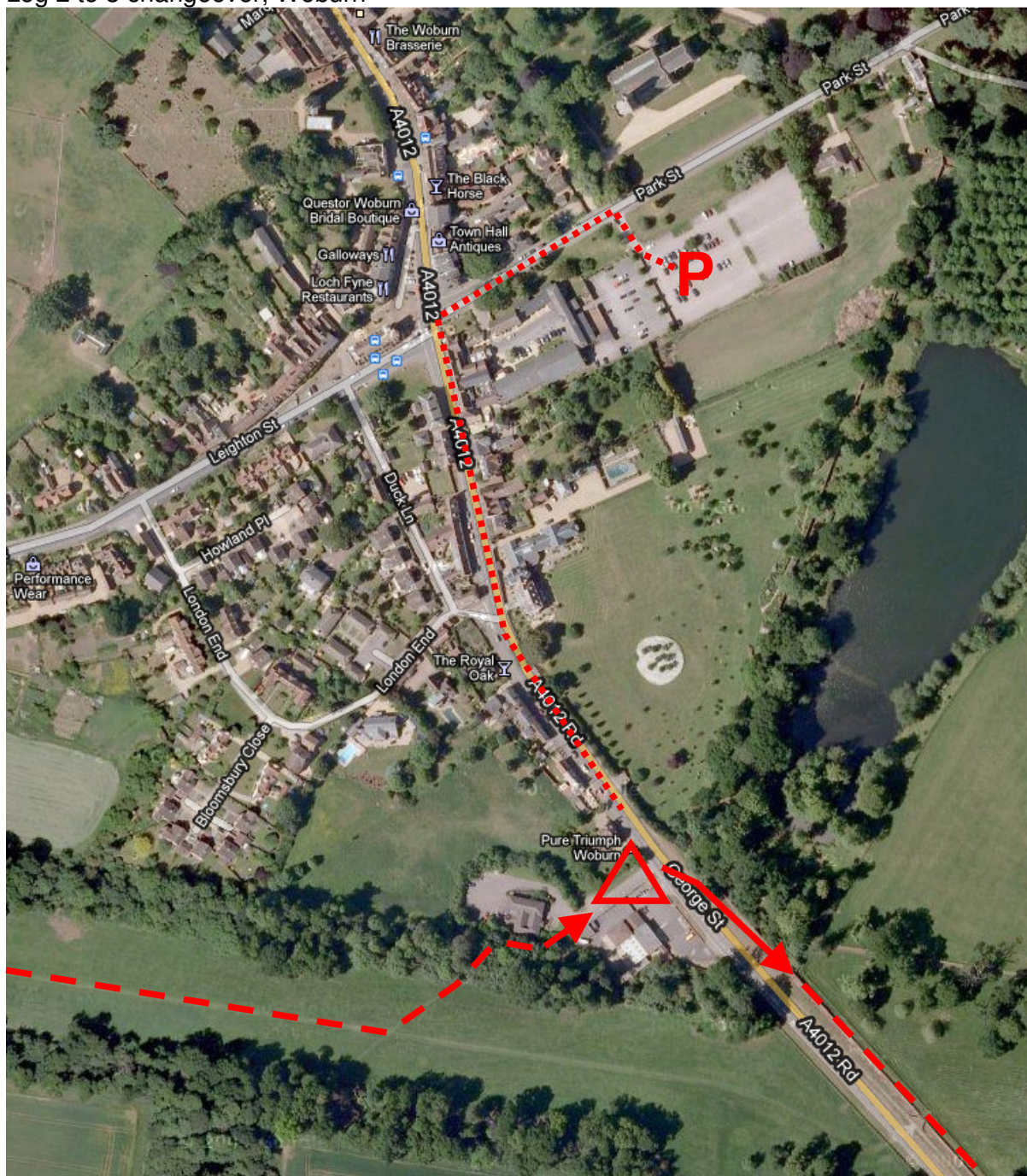
Leg 1 to 2 changeover, Stockgrove



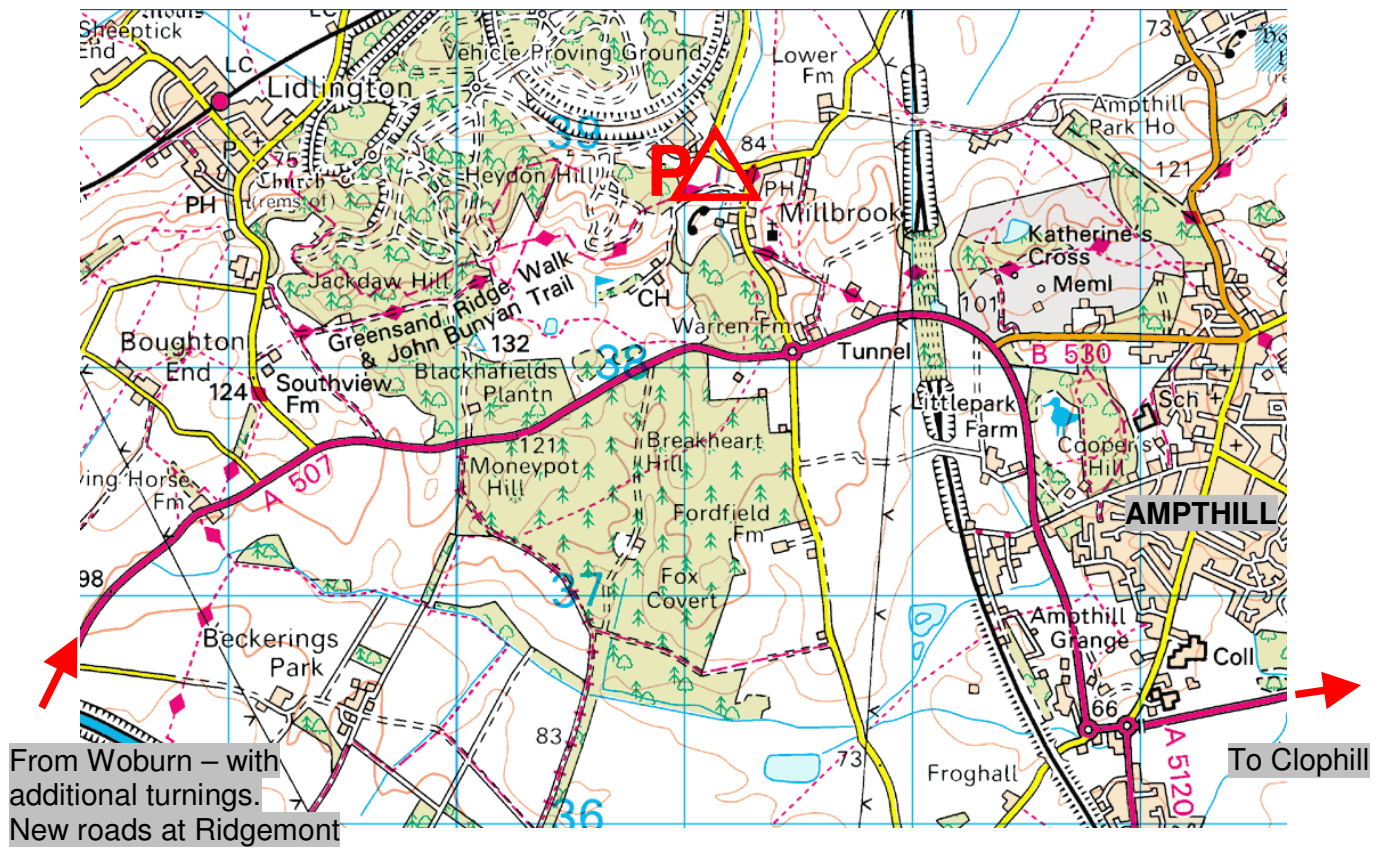
To Millbrook

From Heath & Reach

Leg 2 to 3 changeover, Woburn

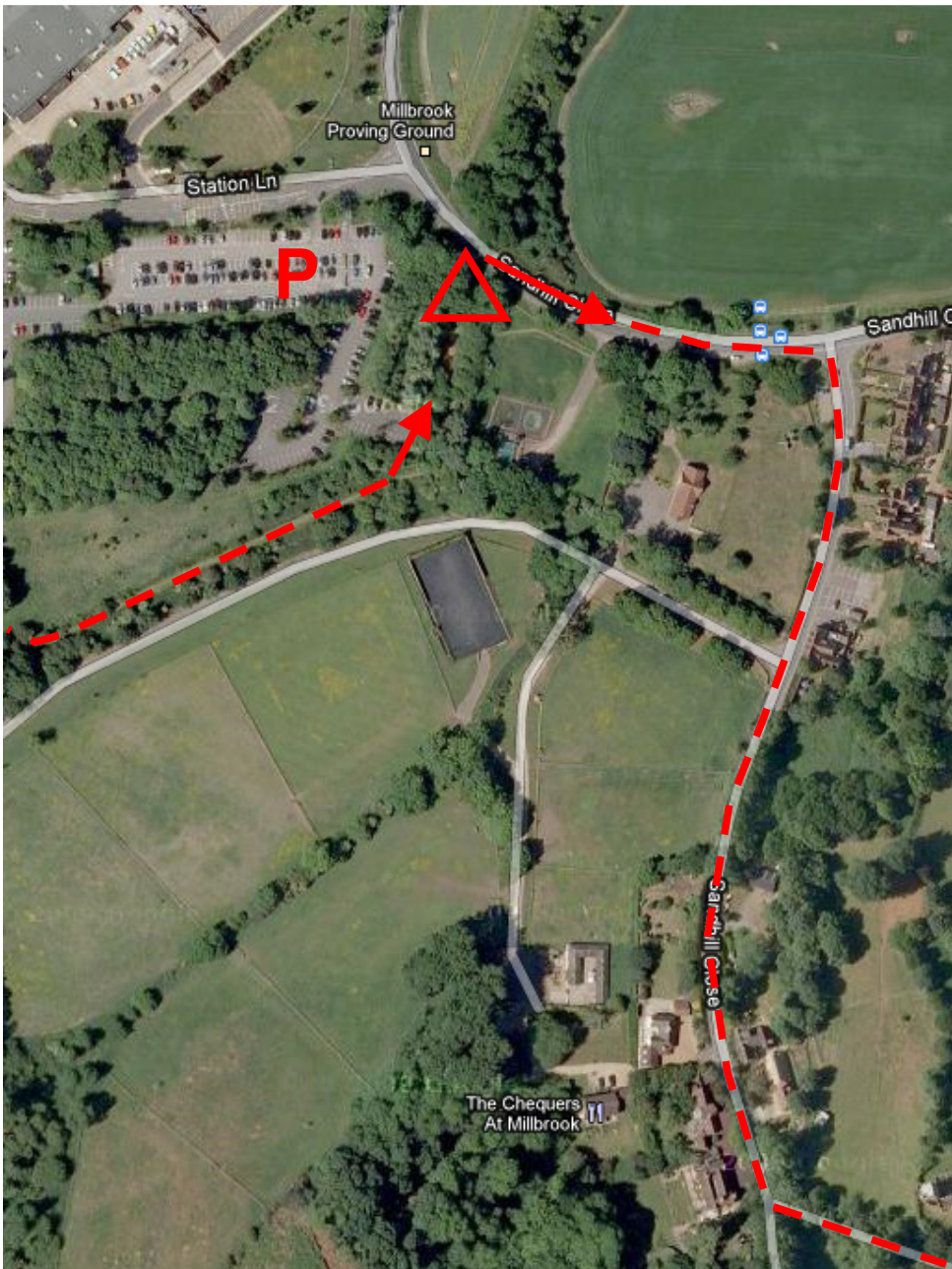


Leg 3 to 4 changeover, Millbrook – driving info



Sat Nav users: post code of parking MK45 2YT – approximate location only!

Leg 3 to 4 changeover, Millbrook



Turning into layby from Clophill direction is easily missed but you can turn into the north end of the layby if you miss it – but take care because cars will be leaving that way. The north end of the layby is the only exit and allows you to cross the central reservation to turn south.



Also, the race route is diverted from the official Greensand Ridge route in Maulden Woods.

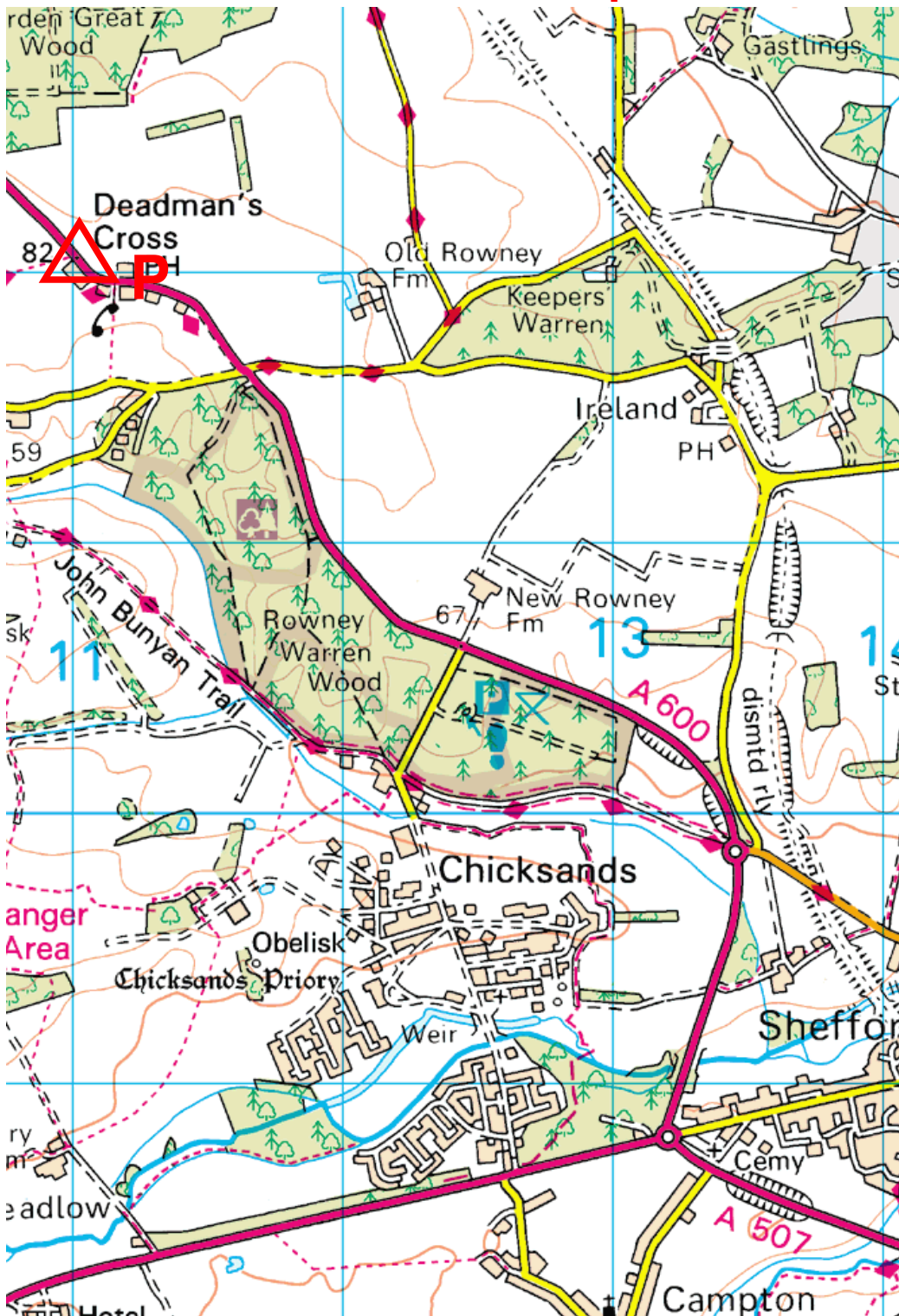
Sat Nav users: post code of parking MK45 3QT – approximate location only!
This location is after the layby.

Leg 4 to 5 changeover, Deadman's Hill, A6



Leg 5 to 6 Changeover, Deadman's Cross, Haynes – driving info

To Northhill



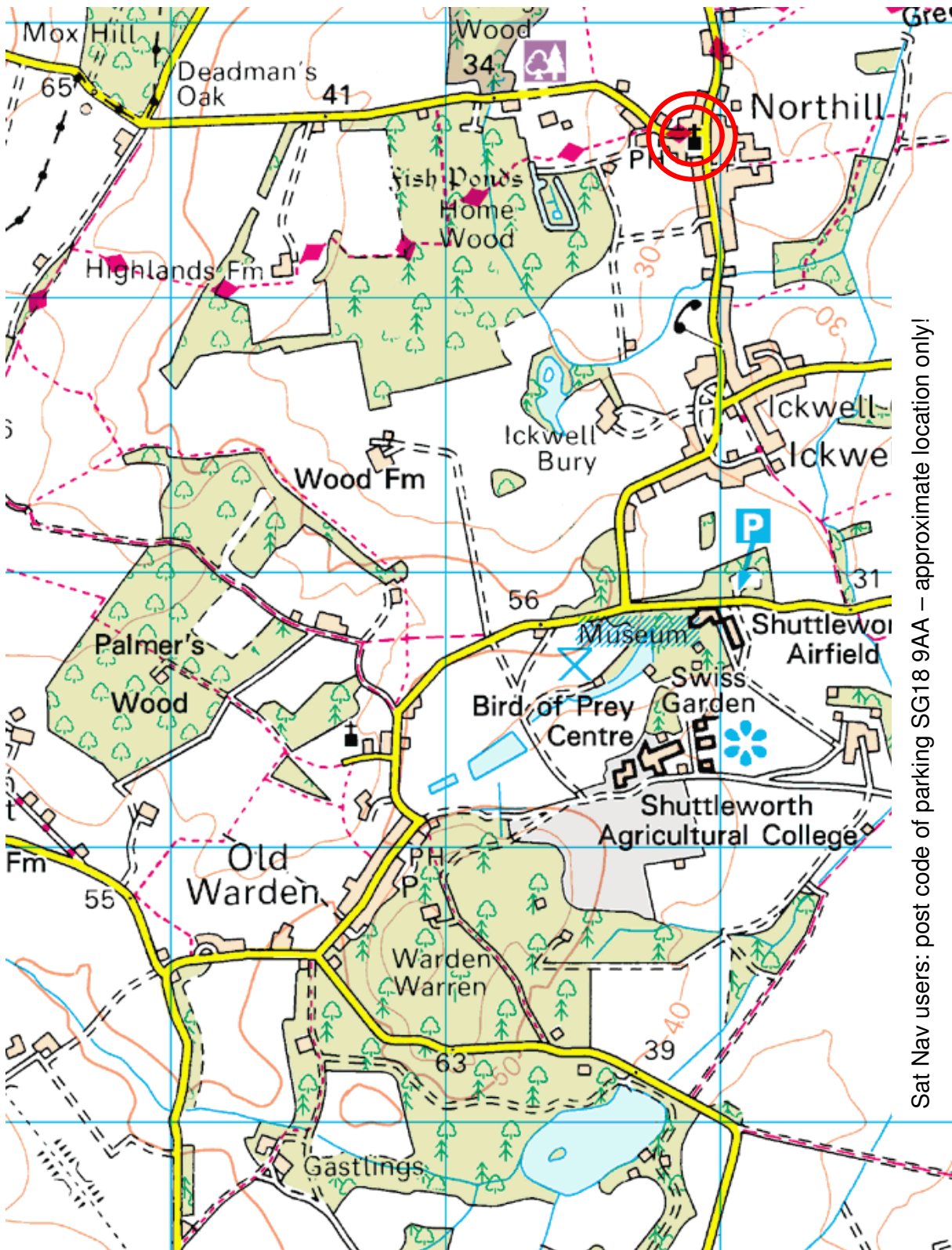
Sat Nav users: post code of parking SG17 5QQ – approximate location only!

From Clophill

Leg 5 to 6 Changeover, Deadman's Cross, Haynes



Leg 6 finish, Northill – driving info



Sat Nav users: post code of parking SG18 9AA – approximate location only!

From Sheffield – same road as previous map

Leg 6 finish, Northhill

